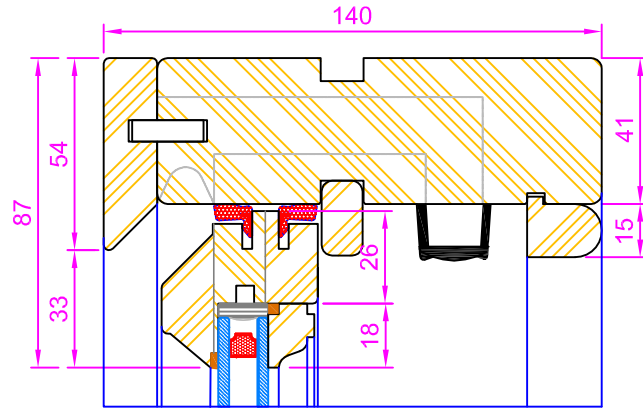
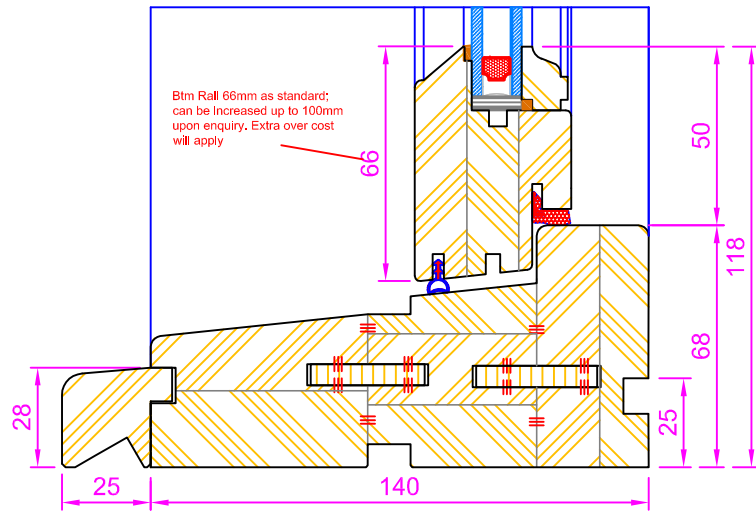


Section A-A
(Dwg.No. 2703)

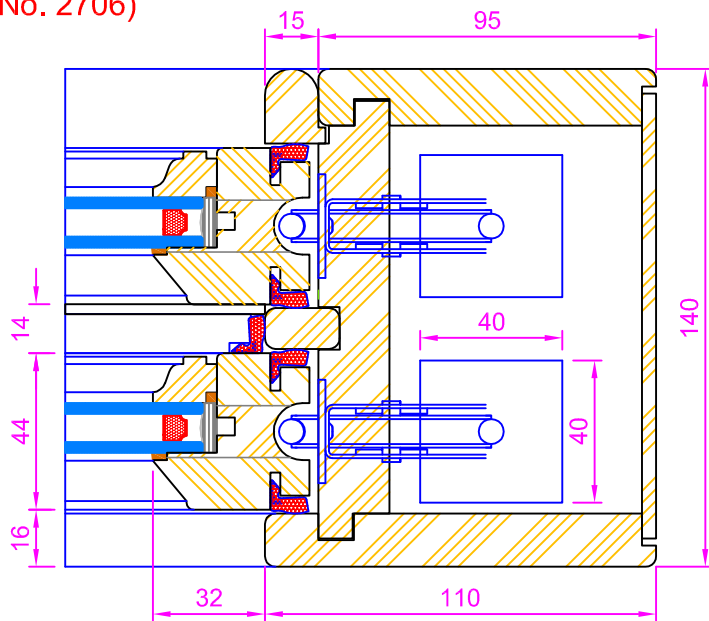
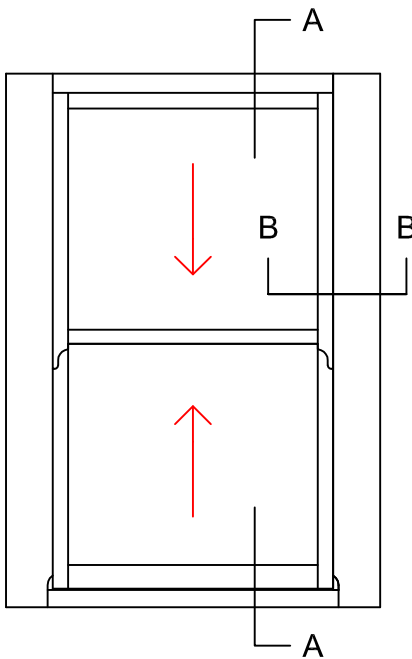


Section A-A
(Dwg.No. 2704)

CILL EXTENSION -
available options:
25mm (165mm o/a) /
47mm (187mm o/a) /
62mm (202mm o/a) /
87mm (227mm o/a) /
114mm (254mm o/a) /
140mm (280mm o/a)



Section B-B
(Dwg.No. 2706)



ALL DIMENSIONS IN mm		ORIGINAL PLOT A2 SIZE (420x594)			
SCALE	GENERAL TOLERANCE	MATERIAL	S. Felczak	J. Stebelski	24.02.2011
1 : 1	+ 2	Timber	A.Gondarz	J. Stebelski	23.09.2010
TITLE		DRAWN BY		CHECKED	DATE
HERITAGE SLIDING SASH		E.Pech			06.08.2007
Sillim-line - CORDS & WEIGHTS		DWG NO.			ISSUE
		2710			0
					SHT
					1